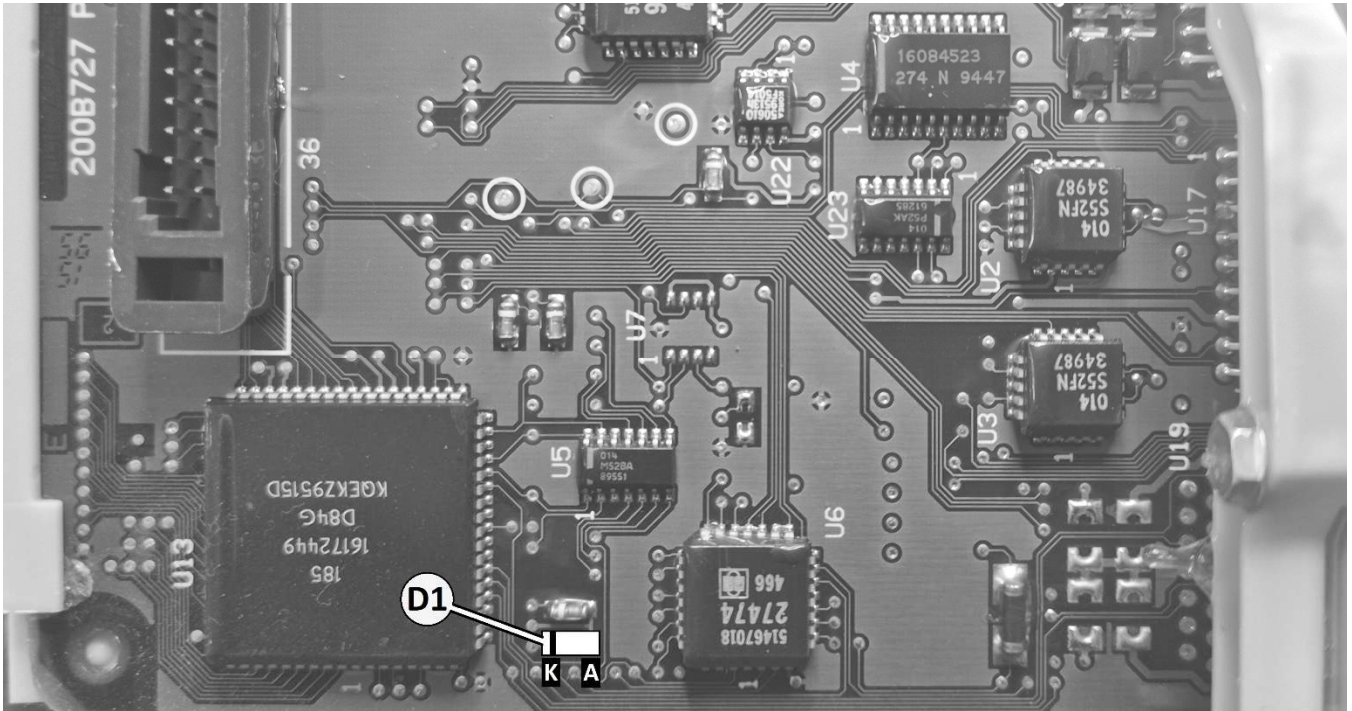
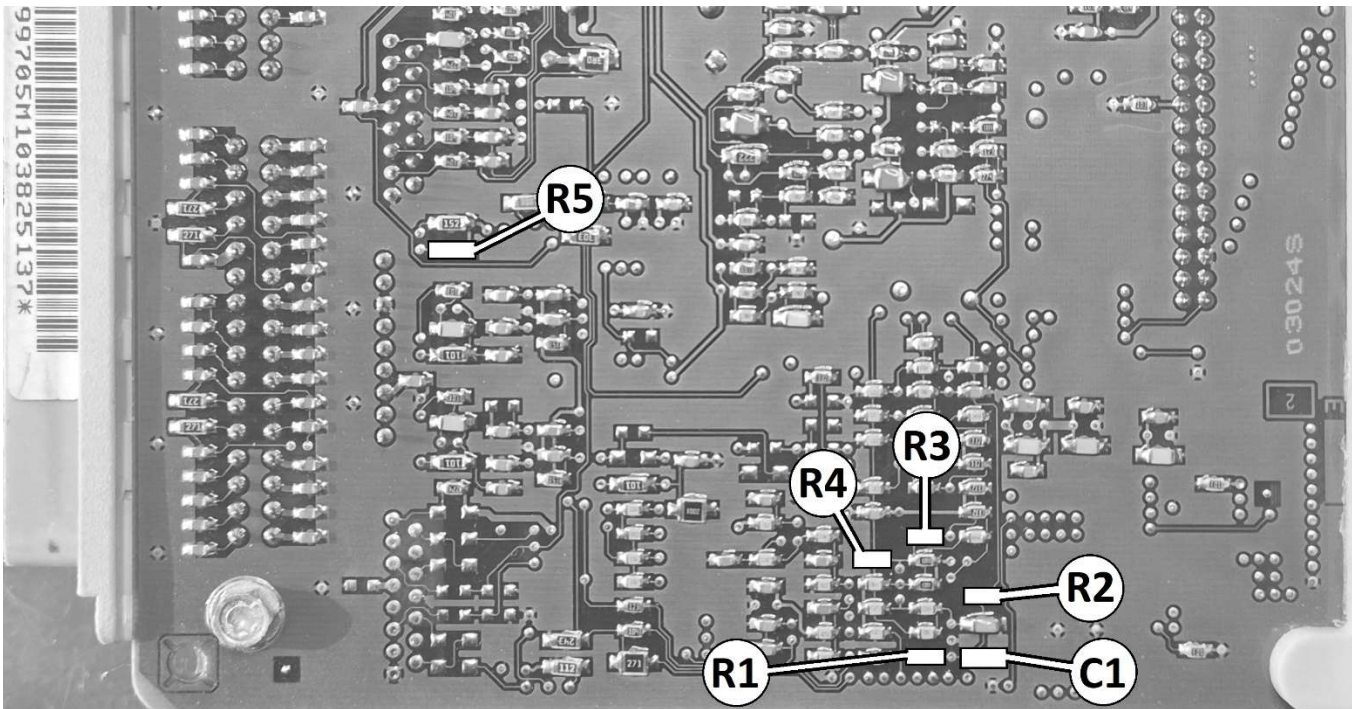




Top Side



Bottom Side



| Designator | Component | Notes |
|------------|---------------------------|--|
| D1 | 7.5v Zener Diode - SOD80 | Ensure correct polarity. Black band end is Cathode (K) |
| C1 | 2nF MLCC Capacitor - 1206 | No marking |
| R1 | 43.2k Resistor – 0805 | “4322” marking |
| R2 | 10k Resistor – 0805 | “1002” marking |
| R3 | 243k Resistor – 0805 | “2433” marking |
| R4 | 11.8k Resistor – 0805 | “1182” marking |
| R5 | 1.5k Resistor – 1206 | “1501” marking |